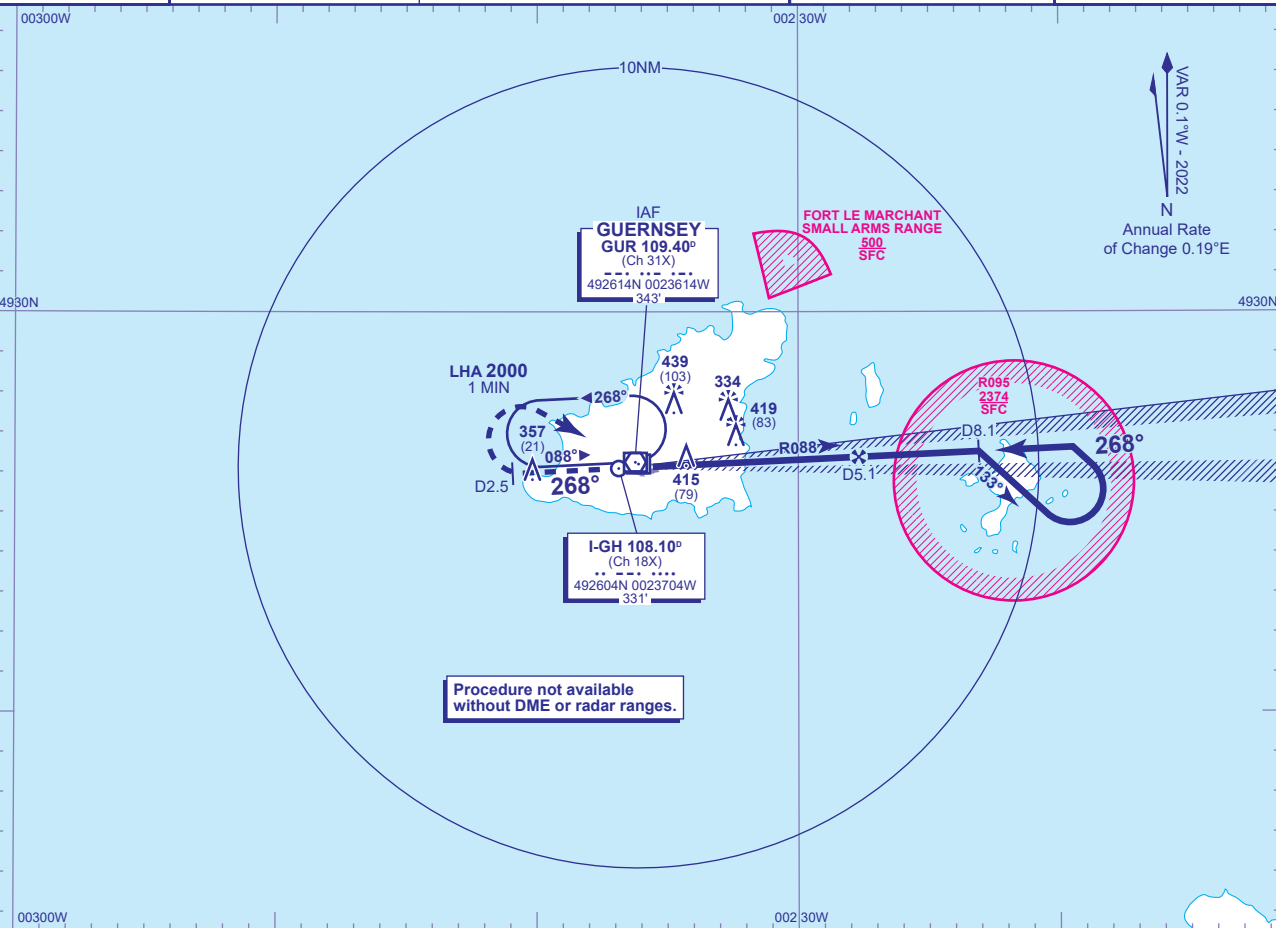


INSTRUMENT APPROACH CHART - ICAO

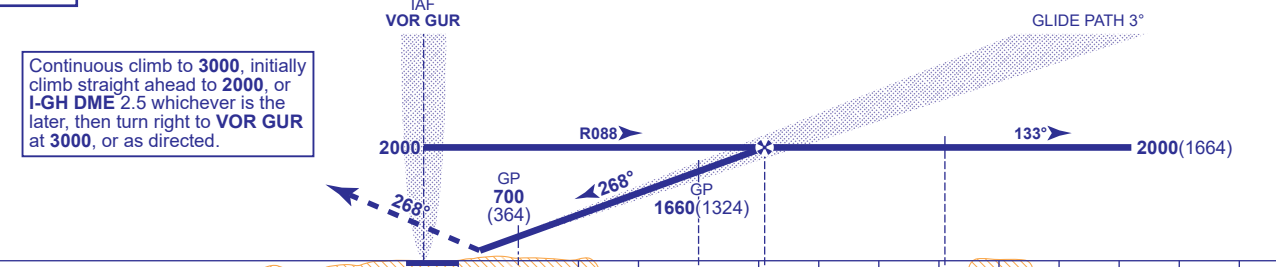
GUERNSEY  
ILS/DME/VOR  
RWY 27  
(ACFT CAT A,B,C,D)

<p>MSA 25NM VOR GUR</p>	APP	128.655	GUERNSEY APPROACH	AD ELEVATION	336	ILS/DME/VOR RWY 27 (ACFT CAT A,B,C,D)  TRANSITION ALTITUDE 5000
	TWR	119.955	GUERNSEY TOWER	THR ELEVATION	336	
	GMC	121.805	GUERNSEY GROUND	OBSTACLE ELEVATION 439 AMSL (103) (ABOVE THR)		
	RAD	124.505	GUERNSEY RADAR			
	ATIS	109.400	GUERNSEY INFORMATION	BEARINGS ARE MAGNETIC		



RECOMMENDED PROFILE GLIDE PATH 3°, 320FT/NM					
DME I-GH	5	4	3	2	1
ALT(HGT)	1980(1644)	1660(1324)	1340(1004)	1020(684)	700(364)

RDH 44



DME I-GH zero ranged to THR RWY 27						0	D1	D4	D5.1	D8.1				
Aircraft Category		A	B	C	D	Rate of descent	G/S KT	160	140	120	100	80		
OCA (OCH)	CAT I	508(172)	516(180)	526(190)	537(201)		FT/MIN	850	740	640	530	420		
VM(C)OCA (OCH AAL)	Total Area	830(494)	830(494)	930(594)	1030(694)									

AIRCRAFT UNABLE TO RECEIVE DME  
Inform ATC. Radar ranges will be passed at 8.1NM outbound, 5.1NM inbound and 2.5NM outbound during missed approach procedure.

- NOTE
- 1 Authority to penetrate restricted area R095 will be granted by Guernsey ATC prior to start of this procedure.
  - 2 Aircraft will normally be required to hold not lower than 3000.
  - 3 Pilots must not descend on RWY 27 GP until fully established on RWY 27 LOC.